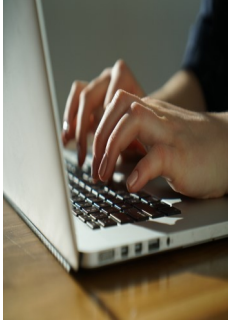


HEADLINE NEWS



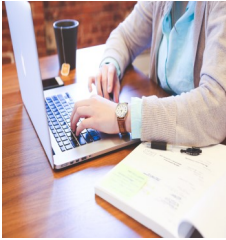
Registration



The Corporate and Community Education Division, CCE, is excited to continue the Registration and Enrollment process during the campus closure. If you are interested in leaning about our training programs or registering online, follow the Steps to Enroll online:

1. **ONLINE:** Search for courses, register, and pay with a credit or debit card online at www.tctc.edu/Learn.
2. **BY PHONE:** 864-646-1700 or toll-free (within the 864 area code) 1-866-269-5677, ext 1700. (While we work remotely during the campus closure, all calls and emails will be returned within 1 business day)
3. **Email:** If you have questions relating to a course or registration process, please email conted@tctc.edu and a Representative from our Customer Resource Department will contact you within a timely manner.
4. **Facebook:** Stay connected with CCE; [facebook.com/tctc.cce/](https://www.facebook.com/tctc.cce/)
5. **COVID-19 Frequency Asked Questions:** <https://www.tctc.edu/about-us/media-resources/novel-coronavirus-covid-19/covid-19-faqs-cce/>

Online Courses



Don't let the COVID-19 Pandemic keep you from gaining a CERTIFICATION!

Take an online course to gain a certification, update your current skills, or learn a new trade. The Corporate and Community Education Division Online Instruction Center offers a wide variety of highly interactive courses that can take you entirely over the internet.

Our online courses are affordable, fun, fast, convenient, and geared just for you.

1. Career Certificates, visit <https://careertraining.ed2go.com/cconline/>
2. Shorter Fundamental Courses, visit www.tctc.edu/ed2go

Manufacturing Skills Standard Council



Are you looking for a new Career, Certification, or Promotion?

MSSC offers complete training to enable workers to build the core knowledge and skills needed in modern manufacturing. Successfully passing the four modular assessments, Safety, Quality Practices & Measurements, Manufacturing Processes, and Production & Maintenance Awareness will assist individuals in finding higher-wage jobs.

<https://cce.tctc.edu/wconnect/ace/CourseStatus.awp?&course=INTMSSC>

1. Class Duration: 4 Weeks
2. 50 scholarships awarded to individuals who qualify
3. Courses held at the Pendleton Campus
4. Interview with local manufacturing companies for employment opportunities
5. 95% Placement of MSSC graduates

For more information regarding scholarship opportunities, entry requirements and enrollment details, contact Andrea Adams at 864-646-2039 or email aadams20@tctc.edu

Heavy Equipment Operator Training



OUTDOOR CAREER OPPORTUNITY! <https://www.tctc.edu/HEO>

With support from our local employers, we are offering the Heavy Equipment Operator Program. In-demand career with excellent salary potential!

8 Weeks to Gain nationally recognized certifications from the National Center for Construction Education and Research (NCCER). Learn to Operate Heavy Equipment: Skid Steer, Front End Loader, Roller/Compactor and Mini Excavator.

For more information regarding class schedule and scholarship opportunities. Email Julia Lee; jlee42@tctc.edu or Timia Hunter; thunte10@tctc.edu

